

**PYROFAB®**

## PASSIVE FIRE PROTECTION

FABRICS FOR SMOKE AND FIRE CURTAINS



Fire barriers form a separating layer between fire and the area to be protected. Fabric fire doors can easily be integrated in the architectural design of a building, allowing functional independence.

Fire doors are intended to prevent fire spreading from one area to another, to contain fires, to ensure smoke-free escape routes and to reduce fire damage. Fabric fire doors are made from **PYROFAB®** fabric, stainless steel reinforced, coated with high-performance polymers, one or both sided and/or laminated with aluminium foil.

Smoke curtains are required in large buildings to prevent toxic gasses caused by a fire from spreading. Smoke curtains guide the smoke through divided sections to the smoke extraction systems. Thus, they prevent the smoke from cooling down and sinking to the floor, which would result in it spreading throughout the building, making the fire brigade's job impossible.

A main development goal for **PYROFAB®** fabric is to always keep the smoke development from the product in class s1 (no to hardly any smoke).

**PYROFAB®** fabric styles comply with the following standards:

Euro class EN 13501 - 1 + A1:2019-05

The particular fabrics are liable to country-specific standards regarding fire protection, fire resistance and smoke gas impermeability. Only the complete construction can be tested. Due to these tests the particular protection category for the construction can be attested and the applicability for defined safety objectives can be conveyed.

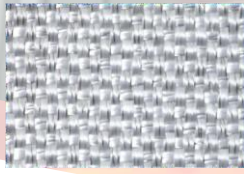
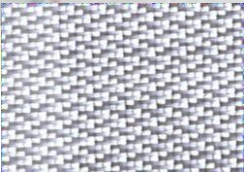
  
**SAINT-GOBAIN**

### PYROFAB® for Smoke Curtains, Smoke Barrages, Small Fire Doors

#### Common Fabrics:

PYROFAB® SILVERLINE 6120 • A2-s1, d0  
PYROFAB® SILVERLINE 6220  
PYROFAB® SILVERLINE 6320  
PYROFAB® SILVERLINE 6920 • A2-s1, d0  
(...)

Common Weaves: Plain, Twill, Cross twill, Broken twill, Satin, Rips or Panama



Further fabrics and functional coatings

### PYROFAB® Sol (B-s1, d0) PV-fire barrier

### PYROFAB® JF (C-s1, d0 to E-d2\*) Special Fire protective Insulation e.g. JetFire

\* depending on the system and structure

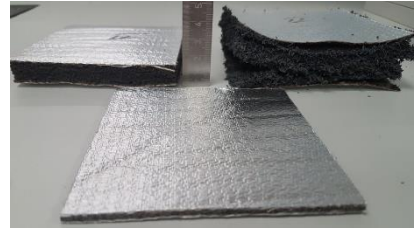
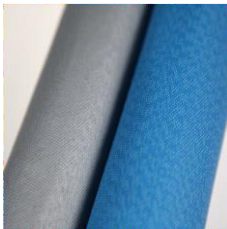
### PYROFAB® for Fire Curtains, Fire Doors

#### Common Fabrics:

PYROFAB® SILVERLINE 8121 • A2-s1, d0  
PYROFAB® SILVERLINE 8521  
PYROFAB® SILVERLINE 9421 • A2-s1, d0  
PYROFAB® SILVERLINE 9521 • A2-s1, d0  
PYROFAB® pearl grey 9121  
PYROFAB® REFLECTORGATE 14221 • B-s1, d0

### PYROFAB® ITX (C-s1, d0 to E-d2\*) contains intumescent components as GAP filler, sealant- system or other application

### PYROFAB® CERAL (A2-s1, d0\*) additional ceramicising coating



**PYROFAB®** fabrics will meet the following tests, tested in the complete construction:

- EN 16034:2014-12  
Pedestrian doorsets, industrial, commercial, garage doors and openable windows
- EN 12101-1:2006-06  
Smoke and heat control systems specification for smoke barriers
- EN 1634-1:2018  
Monitoring of air temperature
- EN 1634-3:2005  
Fire resistance, smoke control tests
- EN 1364-1:12015  
Fire resistance tests for non-loadbearing elements walls
- ISO 21524:2021-07  
Fire resistance tests - Elements of building construction - Requirements for active fire curtains
- BS 5234-2:1992  
Partitions (including matching linings) Specification for performance requirements for strength and robustness including methods of test

**TRUST THE EXPERTS | HKO**  
**H.K.O. Isolier- und Textiltechnik GmbH**  
Zum Eisenhammer 54 • 46049 Oberhausen • Germany  
Phone: +49 208 85994 0 • Fax: +49 208 85994 70  
E-Mail: hko@saint-gobain.com • www.hko.de

Remark:  
This technical information sheet comprises technical specifications and product information according to the state of the art at the time of printing; it will lose validity on publication of a reprint. The technical data sheet applies in connection with other documents of HKO. The technical data of the product may be changed without prior notice. HKO reserves the right to make alterations of the technical data and the materials herein without prior notice in order to keep up with engineering progress and new developments. All technical information and recommendations are based on previous experience and are given after careful review. Due to the variety of influences during processing and application, these pieces of information/recommendations do not release the user from the obligation of own examinations and tests. The technical values are not intended for compiling specifications. The data and explanations in the technical data sheets of HKO in connection with this print do not constitute an acceptance of guarantee. Proposals for application are no assurance of the suitability for the recommended purpose and do not release the user from checking possible infringements of rights of third parties.

HKO does not assume liability for obvious misprints and compositor's errors.

